

# AGL ALL GREEN LIGHTING, INC.

## LED High Mast: FL-LED-L Series

### Description:

The **FL-LED-L High Mast Series** is an exceptional product in both design and performance. Designed to meet critical levels for high demand areas in Harbors, Rail Yards, Correctional Facilities, Airports, Shopping Centers, Ballparks, and other High Mast Flood Light applications. Unique, fold fin heatsink technology greatly reduces thermal density and maintains a low LED junction temperature. The housing is made of die cast aluminum with a tempered glass lens. This fixture is well known throughout the industry for its performance and longevity. Available in a wide range of colors, beam angles, CCT's, and mounting options.



### Specifications:

- **Input Voltage:** 90-305VAC / 347-480VAC
- **Warranty:** 5 Years
- **Calculated Life:** 100,000 + calculated hours
- **LED chips:** Cree XPG3
- **Driver:** Meanwell or Inventronics
- **Operating Temperature:** -40°F ~ 122°F
- **Dimming:** Optional 1-10V dimming, DALI
- **IP Rating:** IP67
- **CRI:** >70 or >80
- **Power Factor:** >.95
- **CCT:** 2700K ~ 6500K
- **Certifications:** FL-LED-L-400W & FL-LED-L-600W are Design Light Consortium listed. Not all versions may be DLC Qualified. Please visit the DLC Qualified Products List at [www.designlights.org](http://www.designlights.org).
- **Finish:** Protective UV stabilized powder coated finish.



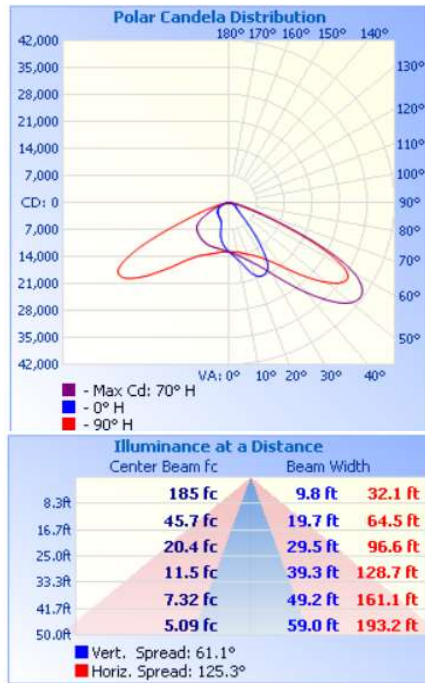
### Lumen Chart:

\*Chart based on 85°x135° beam angle

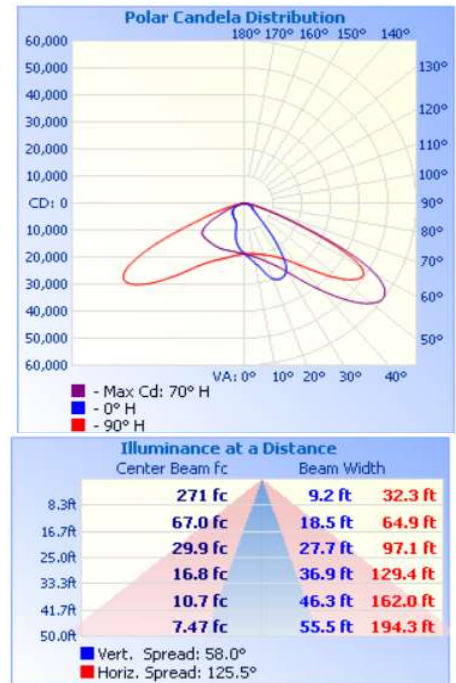
Fixture Model	CCT	Total Lumens	Efficacy (lm/w)	Weight (lb)	EPA	Dimensions	Beam Angle
FL-LED-L-400W/DLC	4000K	54,034	>134	41.8	2.8 ft <sup>2</sup>	20.51" x 4.58" x 22.52"	15° x 15°
	5000K	53,704					30° x 30°
FL-LED-L-600W/DLC	4000K	78,688	>131	60.5	4.1 ft <sup>2</sup>	29.96" x 4.58" x 22.52"	40° x 40°
		5000K					79,068
	5000K	79,068					60° x 90°
		79,068					90° x 90°
5000K	79,068	60° x 135°					
	79,068	85° x 45°					
	79,068	85° x 90°					
79,068	85° x 135°						

## Photometrics:

### FL-LED-L-400W/DLC-40K-85X135







### FL-LED-L-600W/DLC-40K-85X135



To view complete photometric reports or download IES files - please visit our website [www.AllGreenLightingInc.com](http://www.AllGreenLightingInc.com)

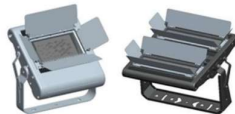
## Ordering Guide:

FL-LED-L-400W/DLC	90-305V	BL	50K	85 x 135	YOKE	Optional Accessories*:
<b>Wattage:</b> 400W/DLC 600W/DLC	<b>Voltage:</b> 90-305V or 347V-480V	<b>Color:</b> [BL]: Black (RAL:9023) [GR]: Gray (RAL:9006) [WH]: White (RAL:9016) [BR1]: Bronze (RAL:8019) [BR2]: Bronze (RAL:8028)	<b>CCT:</b> 27K 30K 40K 50K 57K 65K	<b>Beam Angle:</b> 15° x 15° 30° x 30° 40° x 40° 60° x 60° 90° x 90° 60° x 90° 85° x 45° 85° x 90° 85° x 135°	<b>Mounting:</b> Yoke: Standard  Slipfitter  High Mast Yoke  High Mast Slipfitter 	See Codes Below (Additional Costs May Apply)

## Accessory Codes\*:

- DM:** 1-10V
- DALI:** DALI Dimming
- 10kV:** 10kV Surge Protector
- 20kV:** 20kV Surge Protector
- \_\_ FC:** "X" foot cord
- 3PC/5PC/7PC:** 3 / 5 / 7 Pin Photocell
- MS:** Motion Sensor
- WG:** Wire Guard
- NR:** Natatorium Finish
- 316SS:** 316 Stainless Steel Bracket and Screws

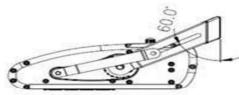
**GS1:** Glare Shield 1



**GS2:** Glare Shield 2



**TMB:** Tilt Mount Bracket



Files, test reports, and certifications are available upon request: (IES files, photometric layouts, LM-79 reports, TM-21 reports, LM-80 reports, ANSI C-136 3G Vibration, Test, ASTM B117 3,000 hour salt fog spray test, Ingress Protection certification, UL certifications, etc.)