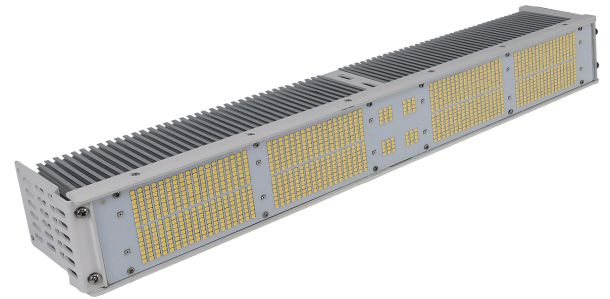
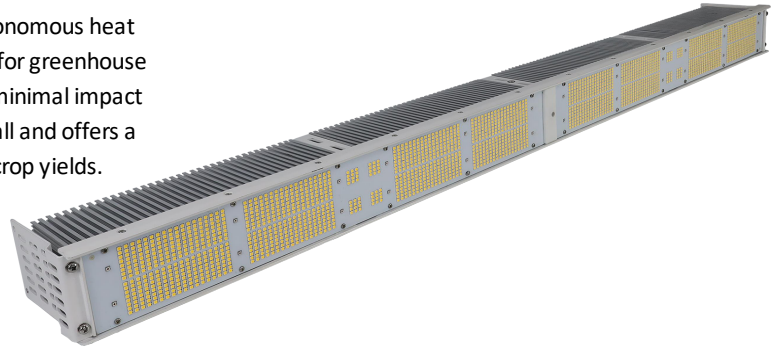


### Product Description:

The GROW-J Series is our latest horticultural LED grow light. The GROW-J3 provides high PPF output and light uniformity, utilizes an autonomous heat dissipation, maximum 600W, light source driven split, suitable for greenhouse high mounting surface, integrated with greenhouse crossbar, minimal impact on natural light irradiation effect. The GROW-J3 is easy to install and offers a wide range of a broad spectrum, which is key for maximizing crop yields.



### Features:

- **Application:** LED Horticulture Light
- **Mounting:** V-Hook
- **Warranty:** 3 Years
- **LED Source:** SMD 5050
- **Operating Temperature:** -4°F ~ 113°F
- **Driver:** Meanwell
- **Housing Material:** Die cast aluminum

### Technical Data:

<b>Certifications</b>	<b>UL</b>
<b>Power Factor</b>	<b>≥ 0.95</b>
<b>IP Rating</b>	<b>IP65</b>
<b>THD</b>	<b>≤ 15%</b>
<b>Input Voltage</b>	<b>120-277V, 50/60 Hz</b>
<b>PPE</b>	<b>2.5 / 2.63</b>

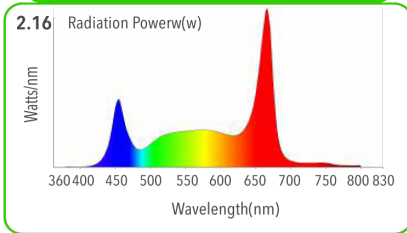
### Specifications:

Fixture Model	PPF(pbar) ( $\mu\text{mol/s}$ )(300-800nm)	PPF ( $\mu\text{mol/s}$ ) 400-700nm	Luminaire Heat Output (W)	PPE ( $\mu\text{mol/J}$ )	Beam Angle
GROW-J3-300W	816.2	787.5	1075 BTU/HR (0.315 KWH)	2.5	120°
GROW-J3-600W	1632.5	1575.0	2150 BTU/HR (0.630 KWH)	2.5	

**Data:**

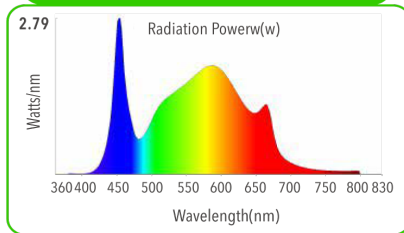
**GROW-J3-300W 2.5 PPE**

**SPECTRAL POWER DISTRIBUTION**



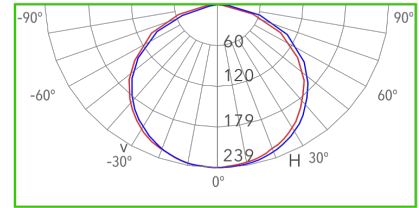
**GROW-J3-600W 2.63 PPE**

**SPECTRAL POWER DISTRIBUTION**



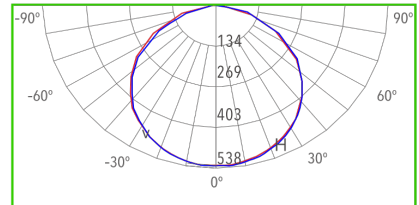
**GROW-J3-300W 2.5 PPE**

**PPID(μmol/s/sr):(400nm-700nm)(LM-79-08)**

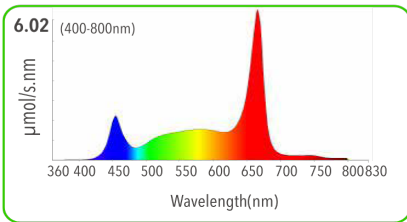


**GROW-J3-600W 2.63 PPE**

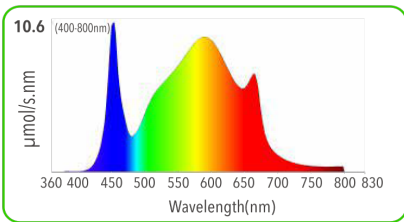
**PPID(μmol/s/sr):(400nm-700nm)(LM-79-08)**



**PF<sub>PBAR</sub>(μmol/s): 816.2 (380-800nm)**



**PF<sub>PBAR</sub>(μmol/s):1705.5 (380-800nm)**



**GROW-J3-300W 2.5 PPE**

**PPFD VS MOUNTING HEIGHT AND COVERAGE AREA**

**Mounting Height**

Mounting Height (m)	PPFD Max./Ave (μmol/s/m <sup>2</sup> )	Coverage Area(m <sup>2</sup> )
0.7m	507.2/126.2	4.32
1.0m	248.5/61.8	8.81
1.5m	110.4/27.5	19.82
2.0m	62.1/15.5	35.23
3.0m	27.6/6.9	79.27
4.0m	15.5/3.9	140.92

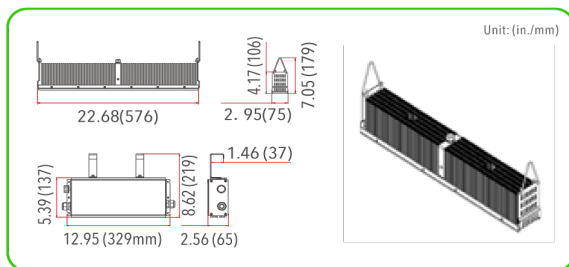
**GROW-J3-300W 2.63 PPE**

**PPFD VS MOUNTING HEIGHT AND COVERAGE AREA**

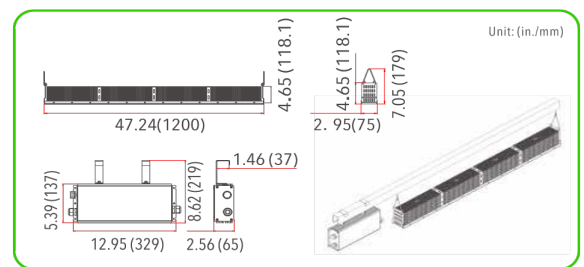
**Mounting Height**

Mounting Height (m)	PPFD Max./Ave (μmol/s/m <sup>2</sup> )	Coverage Area(m <sup>2</sup> )
0.7m	568.9/154.1	4.32
1.0m	278.7/75.5	8.81
1.5m	123.9/33.6	19.82
2.0m	69.7/18.9	35.23
3.0m	31.0/8.4	79.27
4.0m	17.4/4.7	140.92

**GROW-J3-300W**



**GROW-J3-600W**



**Ordering Guide:**

<b>GROW-J-600W</b>	<b>120-277V</b>	<b>GR</b>	<b>V</b>	<b>GL</b>	<b>A</b>	<b>120°</b>	<b>DM</b>
<b>Wattage:</b> 300W 600W	<b>Voltage:</b> 120-277V	<b>Color:</b> Grey	<b>Mounting:</b> V: V-Hook	<b>Lens:</b> GL: Clear Glass CC: Conformal	<b>Efficacy (μmol/J):</b> A: PPE = 2.5 B: PPE = 2.63	<b>Beam Angle:</b> 120°	<b>Accessories*:</b> DM: Dimming (0-10V)

\* Additional Costs Apply