

Product Description:

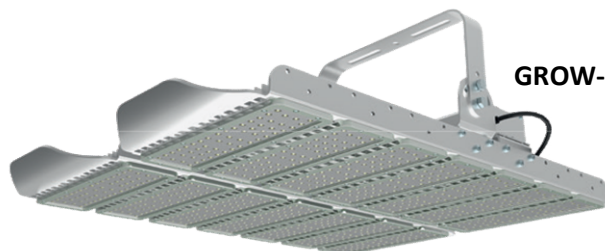
The GROW-K Series is our latest horticultural LED grow light. The GROW-K provides high PPFD output and light uniformity, utilizes a highly effective aluminum heat sink for optimal heat dispersion, LED top lighting in greenhouses or indoor grow rooms and is available with a 0-10V dimming option. The GROW-K is easy to install and offers a wide range of a broad spectrum, which is key for maximizing crop yields

Features:

- **Application:** LED Horticulture Light
- **Mounting:** U-Bracket
- **Warranty:** 3 Years
- **LED Source:** SMD 5050
- **Operating Temperature:** -4°F ~ 113°F
- **Driver:** Meanwell
- **Housing Material:** Die cast aluminum



GROW-K 330W



GROW-K 660W

Technical Data:

Certifications	UL
CRI	95%
IP Rating	IP65
CCT	3K / 4K /5K
Input Voltage	120-277V, 50/60 Hz
Spectrum	KP-4: Daylight



GROW-K-1000W

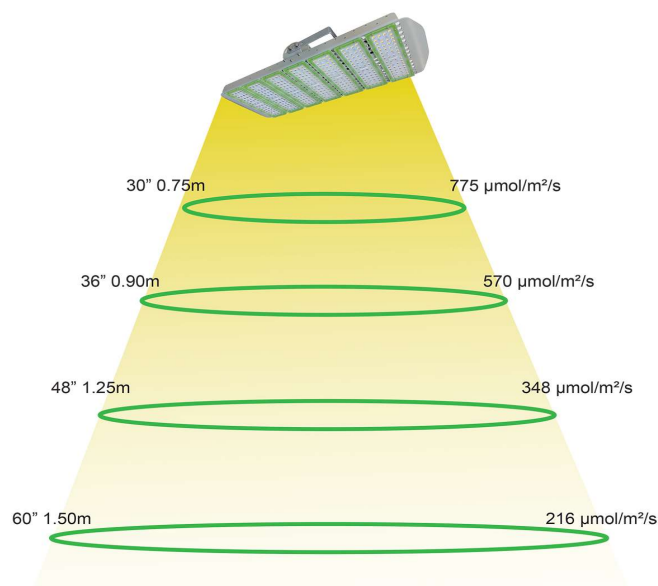
Specifications:

Fixture Model	PPFD at 0.75m ($\mu\text{mol}/\text{m}^2/\text{s}$)	PPFD at 1.50m ($\mu\text{mol}/\text{m}^2/\text{s}$)	Dimensions (inches)	Weight (lbs)	Beam Angle
GROW-K 330W	775	216	29.1" x 10.6" x 5.11"	16.5	60° / 90°
GROW-K 660W	1,550	432	29.1" x 21.6" x 5.11"	33	
GROW-K 1000W	2,325	648	29.1" x 32.6" x 5.11"	50.6	

SPECTRUM KP-4: DAYLIGHT

GROW-K Spectrum		
Color	Wavelength	KP-4
Far Red	700-800 nm	11%
Red	600-700 nm	45%
Green	500-600 nm	28%
Blue	400-500 nm	15%
UVA	315-400 nm	1%

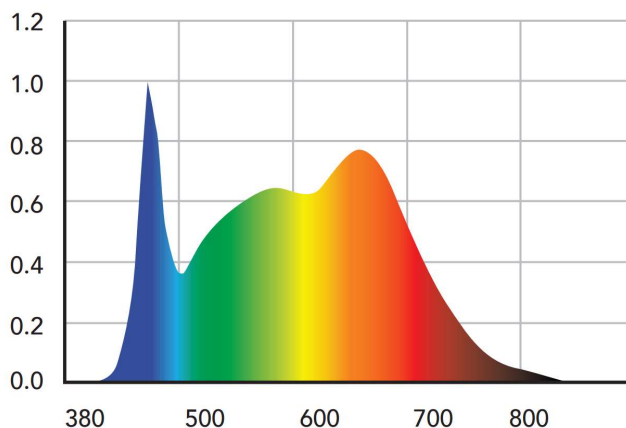
GROW-K 330W



To develop KP-4, we integrated the findings of various studies and trials on the understanding of PAR (Photosynthetically Active Radiation: the light that drives photosynthesis) and peak absorption rates of chlorophyll A, B, and beta-carotene. We also took into account the benefits of light frequencies falling outside of the PAR range such as Far Red and UV wavelengths.

Our 'Red:Far Red' ratio also prevents stems from growing too much and remain compact. The integration of a small percentage of UV light helps speed up the germination process and increase root mass, improves resistance to insects, bacteria and fungus and contributes to tastier and more fragrant plants.

With its high CRI rating over 95, KP-4 also offers an exceptionally pleasant work environment for indoor growers. It has been proven to exceed HPS plant growth in a like-for-like setup.



Ordering Guide:

GROW-K-330W	120-277V	GR	UB	50K	KP4	60°	
Wattage: 330W 660W 1000W	Voltage: 120-277V	Color: Grey	Mounting: UB: U-Bracket	CCT: 30K 40K 50K	Spectrum: KP-4	Beam Angle: 60° 90°	Accessories*: DM: Dimming (0-10V)

* Additional Costs Apply