

LED High Mast: FL-LED-L 5050 Series

Product Description:

Introducing the **FL-LED-L 5050 Series**, a new evolution of AGL's popular FL-LED-L model. The FL-LED-L 5050 utilizes Lumiled 5050 LED chips for a powerful lumen output and a redesigned housing structure that provides a smaller, more compact body that is lighter and less bulky than before. The FL-LED-L 5050 still incorporates the unique fold fin heatsink technology that greatly reduces thermal density and maintains low LED junction temperatures, as well as providing a full range of optics to fulfill a variety of lighting applications.

Features:

- **Application:** LED High Mast Flood, Billboards, etc.
- **Warranty:** 5 Years
- **Long Life:** 100,000 + Hours
- **LED Chip:** Lumileds 5050
- **LED Driver:** Meanwell or Inventronics
- **Operating Temperature:** -40°F ~+ 122°F
- **Lens:** Wide variety of asymmetrical and symmetrical optics
- **Certifications:** ETL

Technical Data:

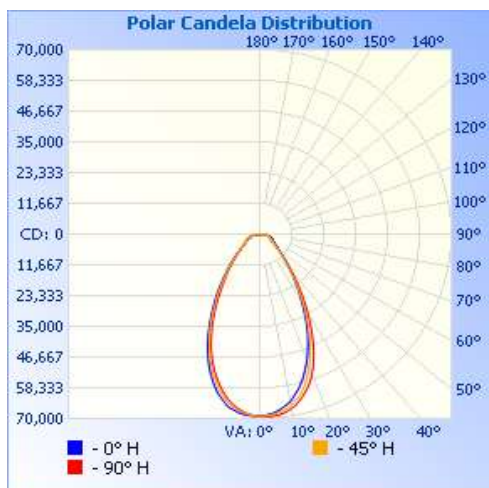
LED Source	Lumileds 5050
CRI	≥ 70 (CRI 80 & 90 available)
IP Rating	IP65 (Luminaire) IP66 (Light Engine) IP65 (Driver)
CCT	3000K~6500K
Input Voltage	90-305V or 347-480V
Power Factor	>0.90

Specifications: *Chart based on 85° x 90° optics **Weight not including remote driver box

Fixture Model	Total Lumens*	Efficacy* (lm/w)	Dimensions (inches)	Weight (lb)	EPA	Beam Angle
FL-LED-L 400W 5050	62,700 lm	>156.7	20.9 x 24.4 x 4.60	39.6	2.5 ft ²	30° x 30° 45° x 45° 60° x 60° 60° x 90° 60° x 135° 75° x 75° 85° x 45° 85° x 90° 85° x 135°
FL-LED-L 500W 5050	74,100 lm	>148.2	23.3 x 24.4 x 4.60	46.2	2.8 ft ²	
FL-LED-L 600W 5050	83,933 lm	>139.8	23.3 x 24.4 x 4.60	47.3	2.8 ft ²	
FL-LED-L 800W 5050	125,400 lm	>156.7	32.7 x 24.4 x 4.60	63.8	4.1 ft ²	
FL-LED-L 1000W 5050	156,750 lm	>156.7	29.2 x 30.1 x 6.69	83.6	4.4 ft ²	
FL-LED-L 1250W 5050	192,299 lm	>153.8	31.02 x 26.1 x 6.33	60.3**	5.43 ft ²	
FL-LED-L 1500W 5050	213,665 lm	>142.4	31.02 x 26.1 x 6.33	60.3**	5.43 ft ²	







Photometrics (600W/60°x60°):



Illuminance at a Distance		
Center Beam fc	Beam Width	
9.7ft	734 fc	10.9 ft 11.0 ft
19.3ft	186 fc	21.8 ft 22.0 ft
29.0ft	82.2 fc	32.7 ft 33.0 ft
38.7ft	46.1 fc	43.6 ft 44.0 ft
48.3ft	29.6 fc	54.4 ft 54.9 ft
58.0ft	20.5 fc	65.4 ft 66.0 ft

■ Vert. Spread: 58.8°
■ Horiz. Spread: 59.3°

Ordering Guide:

FL-LED-L-400W 5050	90-305V	BL	50K	85 x 135	YOKE	
Wattage: 400W-5050 500W-5050 600W-5050 800W-5050 1000W-5050 1250W-5050 1500W-5050	Voltage: 90-305V 347-480V	Color: [BL]: Black (RAL:9023) [GR]: Gray (RAL:9006) [WH]: White (RAL:9016) [BR1]: Bronze (RAL:8019) [BR2]: Bronze (RAL:8028)	CCT: 30K 40K 50K 57K 65K	Beam Angle: 30° x 30° 45° x 45° 60° x 60° 60° x 90° 60° x 135° 75° x 75° 85° x 45° 85° x 90° 85° x 135°	Mounting: Yoke: Standard  Slipfitter  High Mast Yoke  High Mast Slipfitter 	Optional Accessories*: See Codes Below (Additional Costs May Apply)

Accessory Codes:

DM: 1-10V

DALI: DALI Dimming

10kV: 10kV Surge Protector

20kV: 20kV Surge Protector

CRI80 / CRI90

FC: "X" foot cord

3PCR/5PCR/7PCR: 3 / 5 / 7 Pin Receptacle

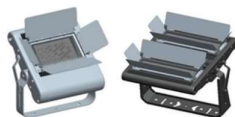
MS: Motion Sensor

WG: Wire Guard

NR: Natatorium Finish

316SS: 316 Stainless Steel Bracket and Screws

GS1: Glare Shield 1



GS2: Glare Shield 2



TMB: Tilt Mount Bracket

