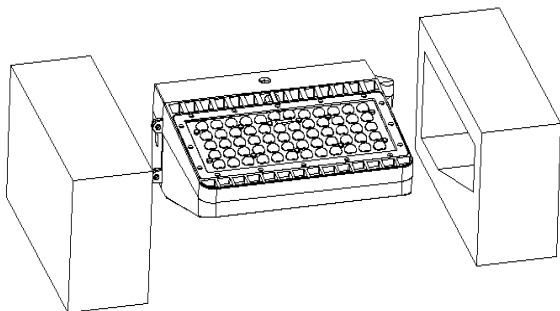
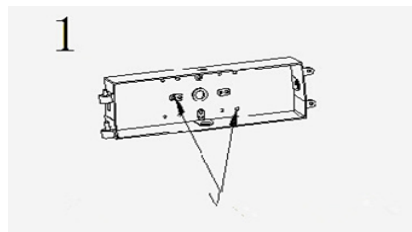


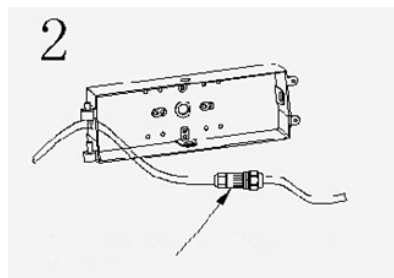
## IV. Package Information



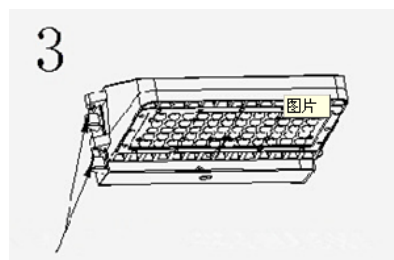
## III. Instruction of installation



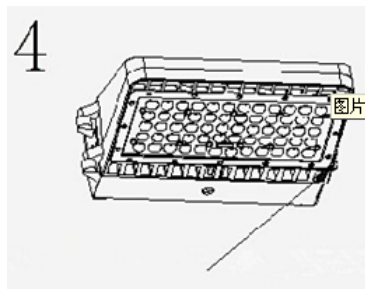
Open the lamp, and use screws to install the power supply box onto the solid surface.



Twist the connector off, and thread the input wire inside the connector, then after make tighter by twisting.

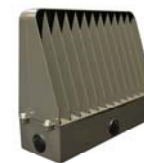


Thrust the heat sinker into the two power supply box holes.



Close the body using screws and tighten them.

## Full Cut-off LED Wall Pack Instruction Manual



### I. Application

Plant, Stadium, Industrial Lighting, Architectural Lighting, etc.

### II. Features

1. Including series patent .Unique funnel heat sinker, Making the lamp better for heat dissipation. Fresnel teeth design for PC reflector, which is suitable for wall light distribution.
2. The LED driver and LED light source are separate, which is convenient for install and assemble.
3. IP 65.

## V. Attentions for installation

- Cut off the power and make sure the wall can burden the weight of the lamp before install.
- Make sure the lamp correctly install, in case of the lamp's dropping down.
- Don't use the lamp in the area with aggressive gas.
- Don't cover the lamp with anything, which is harm for heat dissipation.
- Be careful and connect the group line well.
- Products faults caused by separating, re-modeling, or incorrectly instruction are not in the warranty area.