

AGL ALL GREEN LIGHTING, INC.

FL-LED-L-G2 Series (60W-1800W)

Product Description:

Introducing the **FL-LED-L-G2 Series**, the next generation of AGL's popular flood fixture. The FL-LED-L-G2 provides a powerful lumen output and a thin, redesigned housing structure that provides a smaller, more compact body that is lighter and less bulky than before. The FL-LED-L-G2 still incorporates the unique fold fin heatsink technology that greatly reduces thermal density and maintains low LED junction temperatures, as well as providing a full range of optics to fulfill a variety of lighting applications.

Features:

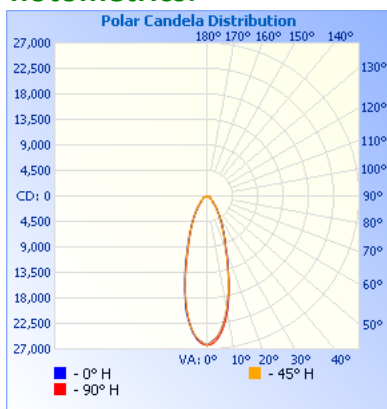
- **Application:** LED High Mast Flood, Billboards, Boardwalks, Sports Stadiums, etc.
- **Warranty:** 5 Years
- **Long Life:** 100,000+ hours
- **LED Chip:** Lumileds/Osram 5050
- **LED Driver:** Meanwell
- **Operating Temperature:** -40°F ~ 122°F
- **Certifications:** ETL

Technical Data:

Input Voltage	90-305V or 347-480V
CRI	≥ 70 (CRI 80 & 90 available)
IP Rating	IP65
CCT	3000K, 4000K, 5000K, 6500K
Power Factor	>0.90



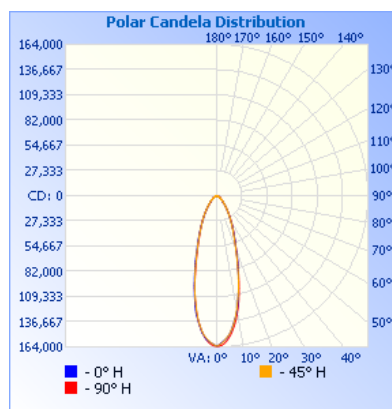
Photometrics:



	Center Beam fc	Beam Width	
9.7R	280 fc	5.8 ft	5.7 ft
19.3R	70.6 fc	11.5 ft	11.4 ft
29.0R	31.3 fc	17.3 ft	17.1 ft
38.7R	17.6 fc	23.1 ft	22.8 ft
48.3R	11.3 fc	28.9 ft	28.5 ft
58.0R	7.82 fc	34.7 ft	34.2 ft

■ Vert. Spread: 33.3°
■ Horiz. Spread: 32.9°

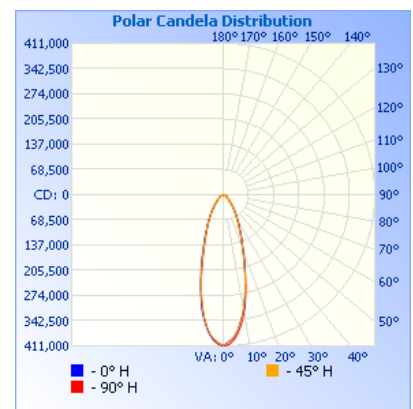
FL-LED-L-G2-100W (30°x30°)



	Center Beam fc	Beam Width	
9.7R	1,734 fc	5.8 ft	5.7 ft
19.3R	438 fc	11.5 ft	11.4 ft
29.0R	194 fc	17.3 ft	17.1 ft
38.7R	109 fc	23.1 ft	22.8 ft
48.3R	69.9 fc	28.9 ft	28.5 ft
58.0R	48.5 fc	34.7 ft	34.2 ft

■ Vert. Spread: 33.3°
■ Horiz. Spread: 32.9°

FL-LED-L-G2-600W (30°x30°)



	Center Beam fc	Beam Width	
9.7R	4,358 fc	5.8 ft	5.7 ft
19.3R	1,101 fc	11.5 ft	11.4 ft
29.0R	488 fc	17.3 ft	17.1 ft
38.7R	274 fc	23.1 ft	22.8 ft
48.3R	176 fc	28.9 ft	28.5 ft
58.0R	122 fc	34.7 ft	34.2 ft

■ Vert. Spread: 33.3°
■ Horiz. Spread: 32.9°



FL-LED-L-G2-1800W (30°x30°)

Specifications:

Fixture Model	Total Lumens (30° x 30°, 50K)	Efficacy (lm/w)	Weight (lb)	Dimensions A x B x C (inches)	Diagram
FL-LED-L-G2 - 60W	9,451 lm	157 lm/W	9.24	10.2 x 14.4 x 3.58	<p>Single LED Board</p>
FL-LED-L-G2 - 80W	12,172 lm	152 lm/W	12.98	12.2 x 14.4 x 3.58	
FL-LED-L-G2 - 100W	14,320 lm	143 lm/W			
FL-LED-L-G2 - 120W	18,616 lm	155 lm/W	15.84	14.1 x 14.4 x 3.58	
FL-LED-L-G2 - 150W	22,196 lm	147 lm/W			
FL-LED-L-G2 - 200W	31,504 lm	157 lm/W	18.04	16.2 x 14.4 x 3.58	
FL-LED-L-G2 - 250W	35,801 lm	143 lm/W	19.58	18.1 x 14.4 x 3.58	
FL-LED-L-G2 - 300W	44,393 lm	148 lm/W	24.42	22.1 x 14.4 x 3.58	
FL-LED-L-G2 - 350W	52,985 lm	151 lm/W	27.06	26.1 x 14.4 x 3.58	
FL-LED-L-G2 - 400W	63,009 lm	157 lm/W			
FL-LED-L-G2 - 500W	71,601 lm	143 lm/W	47.3	22.9 x 26.4 x 4.56	<p>Double LED Boards</p>
FL-LED-L-G2 - 600W	88,785 lm	148 lm/W	48.84		
FL-LED-L-G2 - 800W	126,018 lm	155 lm/W	47.3 **	31.1 x 22.9 x 4.56	
FL-LED-L-G2 - 1000W	143,202 lm	143 lm/W			
FL-LED-L-G2 - 1200W	171,842 lm	142 lm/W	55.66 **	36.9 x 22.9 x 4.56	
FL-LED-L-G2 - 1500W	186,003 lm	124 lm/W	69.96 **	41.6 x 22.9 x 4.56	
FL-LED-L-G2 - 1800W	223,203 lm	124 lm/W	76.56 **	36.9 x 30.7 x 6.18	<p>Triple LED Boards</p>

** These models have external drivers, weights are fixture only

Ordering Guide:

FL-LED-L-G2 200W	90-305V	BL	50K	R30° x 30°	YOKE	
Wattage: 60W 80W 100W 120W 150W 200W 250W 300W 350W 400W 500W 600W 800W 1000W 1200W 1500W 1800W	Voltage: 90-305V 347-480V	Color: BL: Black RAL 9023 GR: Gray RAL:9006 WH: White RAL 9016 BR1: Bronze RAL 8019 BR2: Bronze RAL 8028	CCT: 30K 40K 50K 65K	Beam Angle: Round Profile: R20° x 20° R30° x 30° R60° x 60° Square Profile: S60° x 60° S90°x 90° Asymmetric: 45° x 145° 70° x 145° 60° x 90° 60° x 135° Ultra-Asymmetric: 20° x 125° 25° x 125° 30° x 95° 60° x 140°	Mount: Yoke  Slipfitter 	Optional Accessories*: See Codes Below (Additional Costs May Apply)

Accessory Codes*:

DM: 0-10V

DALI: DALI Dimming

10kV: 10kV Surge Protector

20kV: 20kV Surge Protector

CRI80 / CRI90

__ FC: "X" foot cord

3PCR/5PCR/7PCR: 3 / 5 / 7 Pin Receptacle

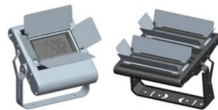
MS: Motion Sensor

WG: Wire Guard

NR: Natatorium Finish

316SS: 316 Stainless Steel Bracket and Screws

GS1: Glare Shield 1



GS2: Glare Shield 2



TMB: Tilt Mount Bracket

