

# ELECTRICAL INSTALLATION

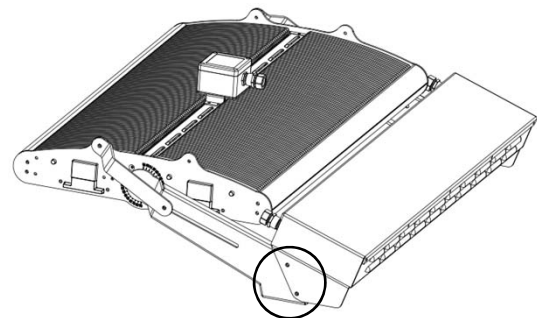
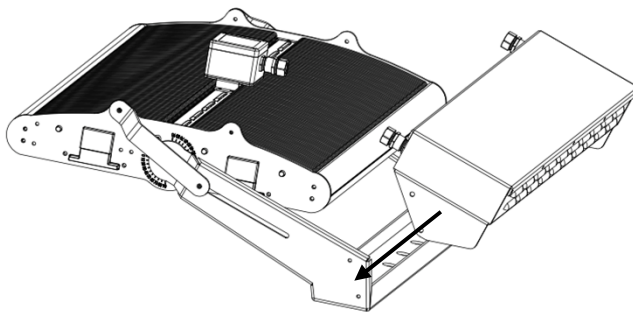
## BREAKERRECOMMENDATIONS

Model	Voltage	D16	D20	D25	D32	D40
FL-LED-L G2-600W	240V 480/415V	7 5	9 7	12 8	15 11	19 14
FL-LED-L G2-1000W	240V 480/415V	4 3	5 4	6 5	8 6	10 8
FL-LED-L G2-1200W	240V 480/415V	5 2	6 2	8 3	11 4	13 5
FL-LED-L G2-1800W	240V 480/415V	3 1	4 2	5 2	6 3	8 4

The quantity of luminaires used per breaker are dependent on the quantity of drivers per fixture and the driver inrush current rating

## DRIVER ON TRUNNION




### MOUNTING LOCATION



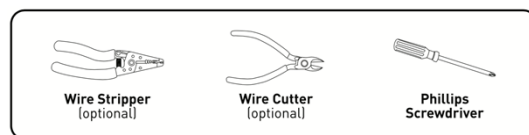
## WIRING INSTRUCTIONS



These instructions do not apply to fixtures supplied with a cord and plug.

- 1) Ensure power is disconnected before making and removing connections or servicing unit.
- 2) Connect the power cord (3-conductor) to the VAC power source following the colour code below.

	BROWN : LIVE
	BLUE : NEUTRAL
	GREEN/YELLOW : EARTH

Tools typically used during installation

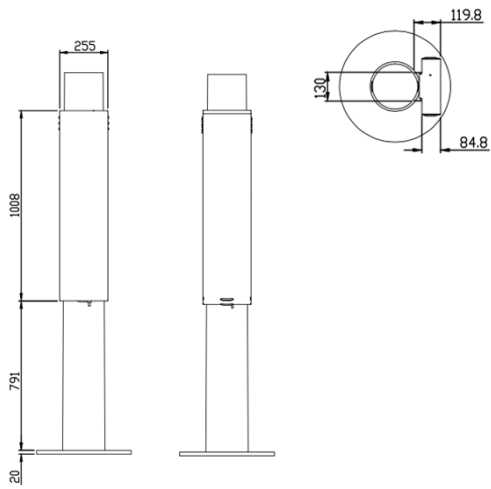


- 3) Connect the dimming cord (2 conductor) to the dimmer/control system following the colour codes below.
    - a) If dimming is not to be used, ensure the DIM+ and DIM- are isolated so they do not make contact, or they will interfere with proper operation of the luminaire
    - b) Dimming cord may not be present if fixture is supplied with integrated wireless controls.
- |  |                      |
|--|----------------------|
|  | RED OR WHITE : DIM + |
|  | BLACK : DIM -        |
- 4) Restore power and verify operation

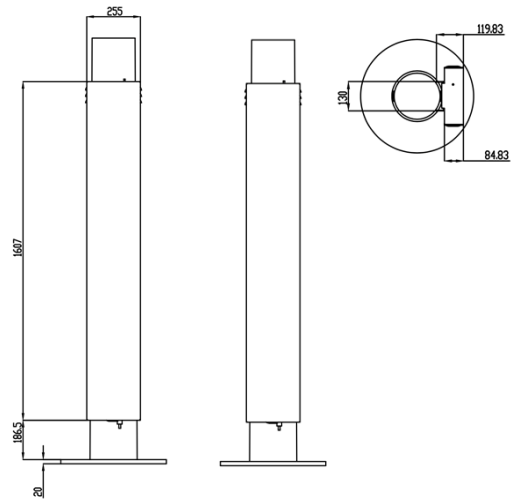
# POLE ENCLOSURE

## DIMENSIONS

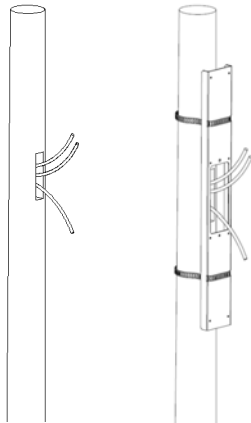
1K2 & 2K4 Model



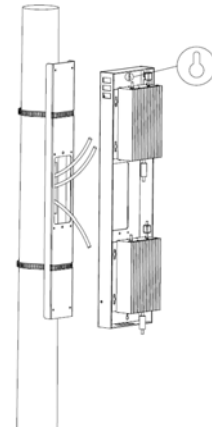
3K6 & 4K8 Model



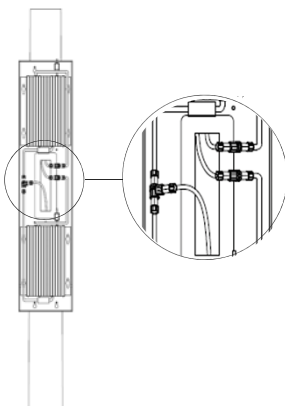
## MOUNTING SEQUENCE TO POLE



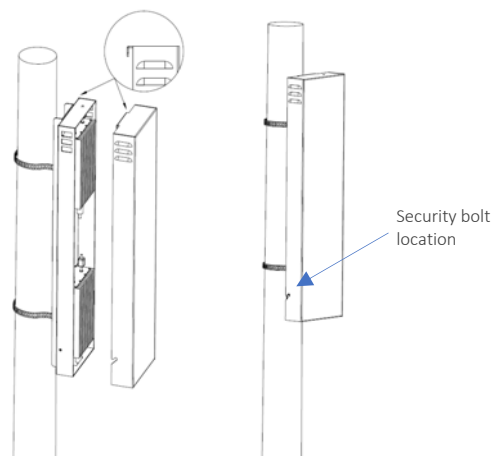
1. Feed the cables through the pole mounting plate and attach the plate to the pole using the ratchet clips.



2. Thread the top (2) and bottom (2) bolts 3/4 of the way into the mounting plate. Fit the box over the bolt heads using the looped holes (shown above). Let those bolts support the weight whilst fitting and securing all (8) mounting bolts.



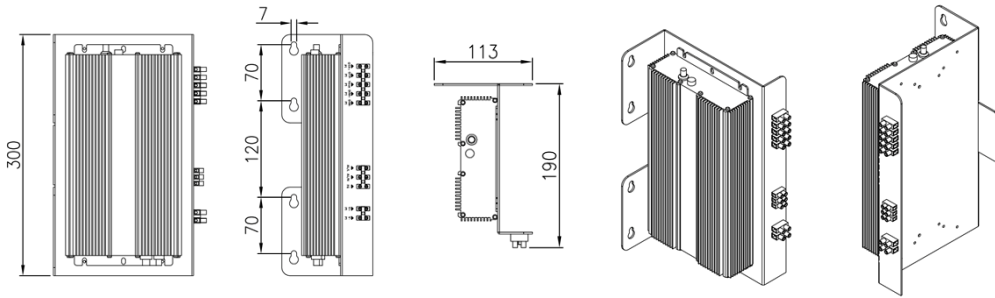
3. Fit the supplied connectors to cables. **MAKE SURE** to follow the markings on the connectors for correct polarity and installation.



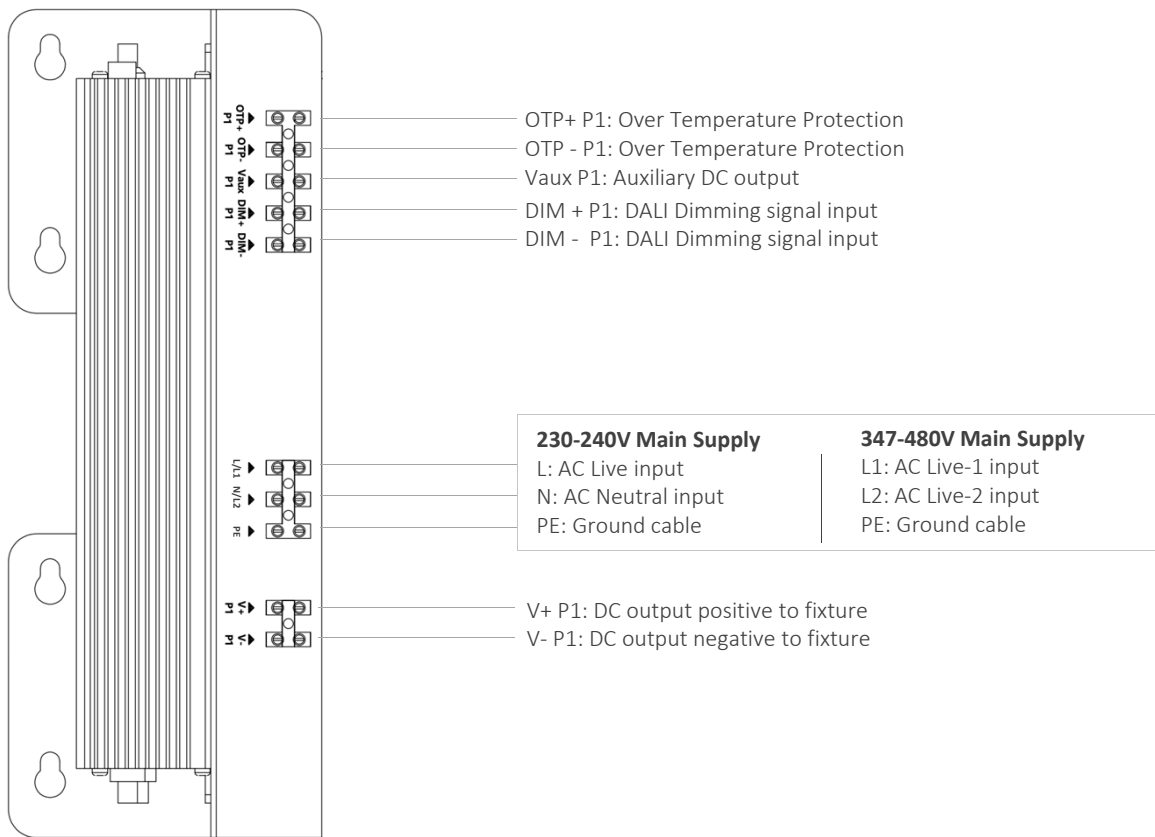
4. Fit the lid to the driver box by first placing the top of the lid over the rear side of the driver box. Then slide the lid over the bottom side of the box and fit the two security screws on the sides.

# ELECTRICAL INSTALLATION FOR SINGLE EUD/ESD 600W GEAR TRAY

## DIMENSIONS / MOUNTING LOCATIONS



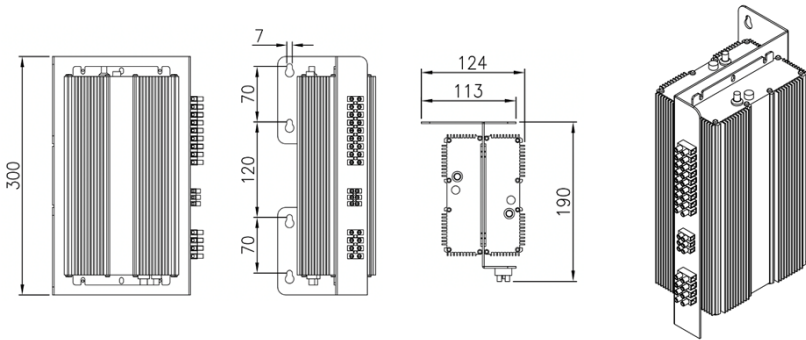
## GEAR TRAY WIRING INSTRUCTIONS



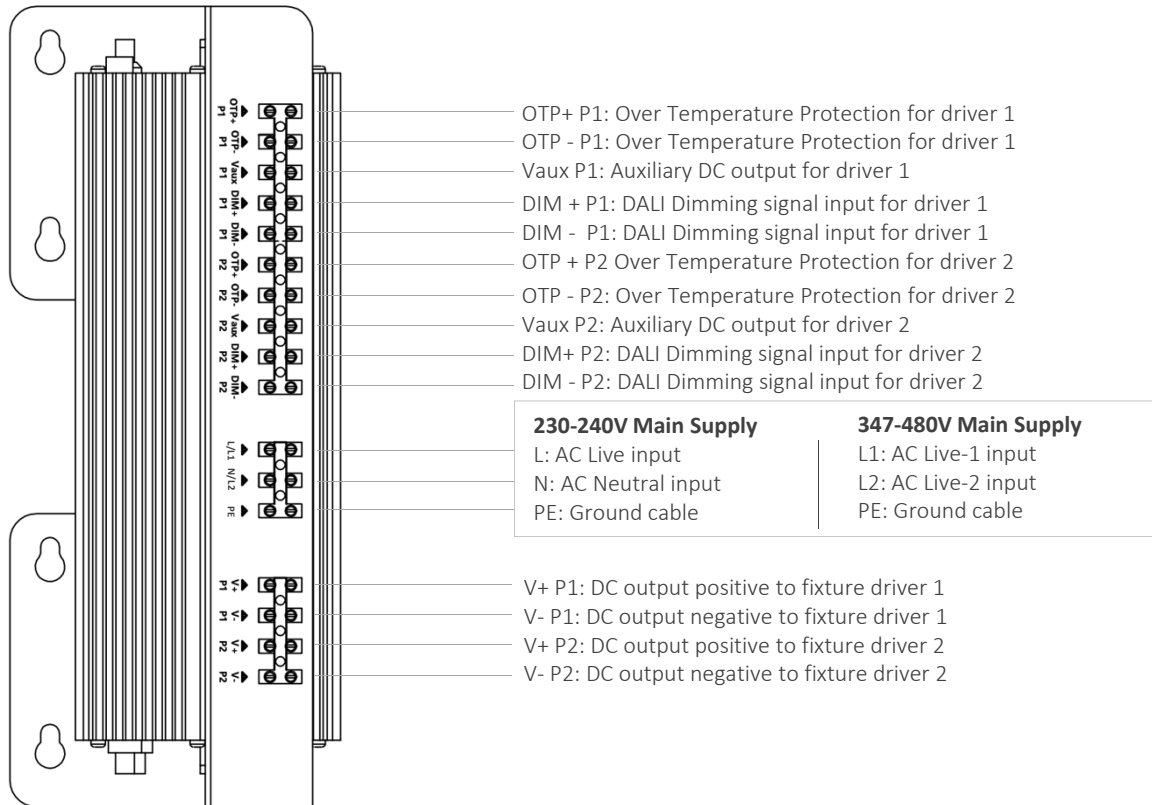
**NOTE:** Installations that are not in accordance with manufacturer's instructions or at incorrect voltages, will void product warranty

# ELECTRICAL INSTALLATION FOR 2x EUD/ESD 600W GEAR TRAY

## DIMENSIONS / MOUNTING LOCATIONS



## GEAR TRAY WIRING INSTRUCTIONS



**NOTE:** Installations that are not in accordance with manufacturer's instructions or at incorrect voltages, will void product warranty